

Welcome to the IAFN SAFE-TA Webinar:

Sexual Abuse Behind Bars: Caring for the Incarcerated Victim



- The audio portion of this meeting is being delivered over a phone connection.
- *If you have not already done so, please dial 1-888-479-6531 and use 900777 as your entry code.
- IAFN requests that you e-mail the names of any non-registered attendees who may be sharing this webinar experience with you so we can track attendance. Please send additional attendee names to INFO@IAFN.ORG today.

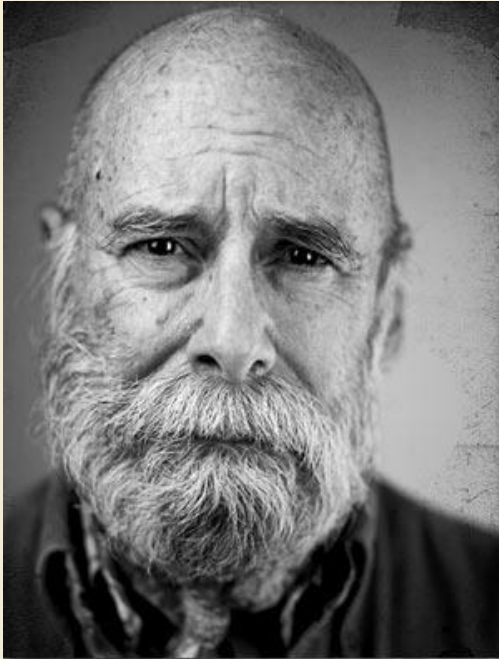
Thank you in advance for your help and cooperation!

SAFETA Webinar Series



- This project was supported by Grant No. 2011-TA-AX-K021 awarded by the Office on Violence Against Women, U.S. Department of Justice. The opinions, findings, conclusions, and recommendations expressed in this presentation are those of the authors and do not necessarily reflect the views of the Department of Justice, Office on Violence Against Women.

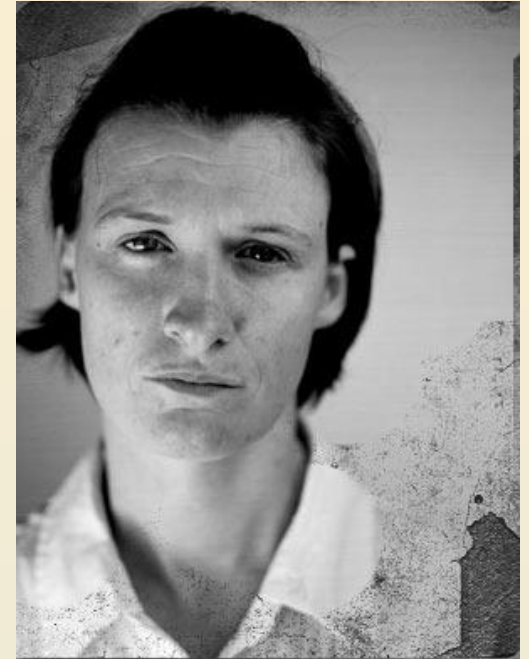
216,600 and Counting...



Photography by James Stenson



Photography by James Stenson



Photography by James Stenson

Presenter:
Linda McFarlane, LCSW
Deputy Executive Director
Just Detention International

Workshop Outline

- Introductions and definitions
- The basics:
 - Prevalence
 - Dynamics
 - Impact
- Model programs
- Best practices and effective strategies
 - Working as a team with corrections officials
 - Providing services to survivors of sexual abuse behind bars
- Questions and wrap-up



Just Detention International (JDI) is a non-profit health and human rights organization that seeks to end sexual abuse against adults and children in all forms of detention.

JDI's three core goals are:

- to hold government officials accountable for prisoner rape;
- to change ill-informed public attitudes about sexual violence behind bars;
- to ensure that survivors of this kind of abuse get the help they need.

Sexual Violence

any form of unwanted sexual contact

Sexual violence may include:

- harassment
- sexual exploitation
- sexual battery
- penetration of any body opening with a body part or object

Perpetrators may use:

- threats
- coercion
- authority
- extortion
- physical force

Bryson's Story



Photography by James Stenson

The Prison Rape Elimination Act

- Passed in 2003
- First federal legislation to address sexual abuse behind bars
- Binding on corrections facilities nationwide
- Mandates zero tolerance for sexual violence



National Prison Rape Elimination Commission (NPREC) Standards

NPREC released national standards on June 23, 2009, which have been revised and are now with the Department of Justice. The Attorney General is expected to release final standards by 2012.



The standards provide guidance for addressing sexual abuse behind bars, including an examination by a qualified forensic medical professional.

Considerations for Community Service Providers

Depending on the finalized standards, community sexual assault response teams may be asked to:

- Develop or join institutional Sexual Assault Response Teams (SARTs)
- Offer training to corrections departments
- Provide incarcerated survivors with services or prevention education
- Review corrections policies and make recommendations for improvements

Prevalence of Sexual Violence in Adult Prisons and Jails and Juvenile Facilities



Estimated numbers of individuals victimized in 2008:*

- Adult Prisons 91,400
- Adult Jails 108,100
- Juvenile Facilities 17,100
- **Total 216,600**

*From the BJS surveys of sexual violence as reported in *DOJ PREA Notice of Proposed Rule Making*, released January 24, 2011

Reporting Rate



In 2008, there were 7,444 formal allegations of sexual abuse in adult prisons throughout the US.

When surveyed anonymously, 91,400 prison inmates stated that they experienced sexual abuse over the same period.

In General, Perpetrators Target:

- Younger or older inmates; people locked up for the first time who are not experienced in the ways of prison life, not street-smart, and not gang-affiliated;
- “Trouble makers” and those who are not well-liked;
- Lesbian, gay, bisexual, and transgender (LGBT) inmates or those who are perceived to be gender-non-conforming;

In General, Perpetrators Target:

- People who are small in stature or physically weak;
- “Attractive targets” (physical appearance or resources);



- People with disabilities, mental illness, and a previous history of trauma/sexual assault;
- People convicted of certain crimes.

A black and white photograph of a prison hallway. The hallway is long and narrow, with a tiled floor and a ceiling with several fluorescent light fixtures. On both sides of the hallway are cell doors made of metal bars. The perspective is from the end of the hallway, looking down its length. The lighting is somewhat dim, creating a somber and institutional atmosphere.

The Dynamics of Sexual Abuse Behind Bars

Inmate-on-Inmate Sexual Violence

At most jails, prisons, and juvenile facilities, sexual contact is prohibited among inmates.

Continuum of sexual violence:

- Sexual comments and touching
- Sexual pressure or intimidation
- Stalking and “fatal attractions”
- Sexual violence in intimate relationships
 - Abusive relationships
 - Protective pairing
- Sexual assault

Chino's Story



Staff-on-Inmate Sexual Violence

In all 50 states, it is illegal for staff to engage in sexual activity with inmates or juveniles in detention.

Continuum of sexual violence:

- Inappropriate comments/harassment
- Sexual requests
- Voyeurism
- Abuse of search authority
- Sexual exchange
- Sexual intimidation
- Sexual assault

Garrett's Story



Impact of Sexual Violence



Photography by James Stenson

- Development of Rape Trauma Syndrome and PTSD
- Increased suicidality
- Exposure to sexually transmitted infections, including HIV
- Exacerbation of preexisting psychiatric disorders

Impact of Incarceration on Survivors

- Little control over body and surroundings
- Punishment
- Little or no access to services
- Retaliation
- Isolation
- Ongoing contact with perpetrator(s)
- Increased likelihood of revictimization



Barriers to Reporting

- Lack of confidentiality
- Fear of not being believed
- Fear of isolation and loss of privileges

- Fear of retaliation and revictimization
- Fear of being labeled a “snitch”
- Lack of trust in staff to protect survivors





Model Programs:

- Inmate Outreach Project
- Paths to Recovery
- Standards “Early Adopter” projects

Inmate Outreach Project

- MOUs with all 33 California state prisons and their local rape crisis programs
- Cross training
- Informational placards
- Bringing prison staff in the community SARTs

Paths to Recovery



- Two pilot teams:
 - California Institution for Women + Riverside Area Rape Crisis Center
 - California Correctional Institution + Women's Center-High Desert

- Confidential rape crisis counseling for survivors: no time limit, no mandate to report
- Staff training
- Inmate education
- Involvement of community expert on internal sexual assault response teams

Benefits of the Program for Survivors:

- Provides same quality of care that is available in the community
- Reduces the impact of trauma and promotes healthy coping skills
- Provides opportunities to address historical trauma and its impact
- Increases likelihood that survivors will participate in the investigative process

Standards “Early Adopter” Projects

- Policy review and recommendations
- Staff training: train the trainer
- Peer education
- Improved departmental response
- Safer facilities and culture change



Best Practices for Working with Survivors Behind Bars



Overcoming Barriers

- Lack of resources and/or funding
- Ethical dilemmas/fears about working with incarcerated survivors
- Corrections culture
- Differing priorities of corrections staff vs. community SART members
- Confidentiality and consent concerns
- Logistical challenges
- High staff turn-over

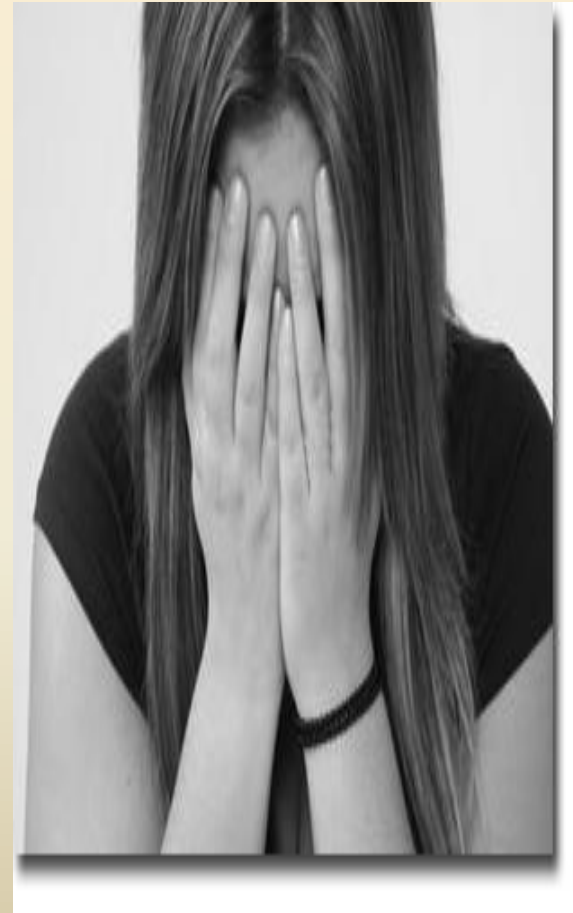
Working in Partnership with Corrections

- *Respect* each other's roles and survivors' dignity
- *Communicate* effectively around sensitive issues and when roles are in conflict.
- *Trust* each member of the team to fulfill his or her role.



Working with Survivors Behind Bars

- Be clear about your professional obligations to patient care and dignity
- Plan ahead regarding logistics
- Give information verbally and in writing to the survivor; ask about follow up



What you can do:

- **Identify** corrections facilities (prisons, jails, youth detention facilities) in your service area.
- **Contact** administrators and ask if they are addressing sexual violence at the institution and if you can help.
- **Offer** to provide training to corrections staff about the dynamics of sexual violence.
- **Invite** a corrections official to be part of your community-based SART.

Resources

- Department of Justice’s Draft National Standards:
www.ojp.usdoj.gov/programs/pdfs/prea_nprm.pdf
- Office of Justice Programs Resources:
www.ojp.usdoj.gov/reviewpanel/resources.htm
- American University’s Project on Addressing Prison Rape:
www.wcl.american.edu/nic/prea.cfm
- Just Detention International: www.justdetention.org
- Meeting the Needs of Prison Rape Victims – a Technical Assistance Guide from PCAR:
www.pcar.org/sites/default/files/file/TA/PrisonRapeGuide.pdf

Contact Information

Linda McFarlane

Deputy Executive Director

Just Detention International

(213) 384-1400 x107

lmcfarlane@justdetention.org

www.justdetention.org